

IN THIS ISSUE

1 WELCOME
NEWEST MEMBER!

2 APWA CALL FOR
MEMBERS

3 Road Safety
Champion
Program

4 KS LTAP Update

5 APWA Chapter
First Responder

6 Local Food Sales Tax
APWA Accreditation

WELCOME NEWEST APWA MEMBER



This is a future APWA member, Lexi Ann! She was having a special moment with her dad, APWA of KS President, Michael Heigert!

THE KANSAS DRIVE TO ZERO (DTZ) COALITION: SEEKING NEW TRAFFIC SAFETY CHAMPIONS!

Members of APWA, your voice and experience in transportation infrastructure is welcomed to help reduce serious injury and fatal crashes on public roads. Did you know 70% of fatal and serious injury crashes in Kansas occur on the local road network? Kansas has several Emphasis Area Teams (EAT) working on this issue. We hope you will consider being part of any EAT of interest, but particularly the Intersections EAT who are requesting additional expertise from local agency transportation professionals.



Who is the DTZ Coalition? The DTZ is a 22-member executive body that both guides the development and implementation of strategies to reduce fatal and serious injury crashes, via the Kansas Strategic Highway Safety Plan. The DTZ mission is simple, to save lives.

What are EATS? The SHSP and DTZ is supported by **8 Emphasis Area Teams (EATS) and an additional Data Support Team**. Each EAT consists of technical specialists and traffic safety champions that work on targeted strategies to reduce death and injury with common crash characteristics. These crash characteristics generally fall into three categories: risky behaviors, vulnerable road users, or severe crash prevention:

- **Occupant Protection**
- **Impaired Driving**
- **Older Drivers**
- **Teen Drivers**
- **Pedestrians and Cyclists**
- **Roadway Departure**
- **Intersections**
- **Local Roads**
- **Data Support**

What are the responsibilities of EAT members? The EATs work on advancing the implementation of strategies in the SHSP and will be involved in the next SHSP Update, scheduled to begin in 2024. The EATs report to the DTZ Coalition by developing and implementing safety-related programs and projects from the SHSP. Each EAT is led and supported by a Manager (consultant), Owner (KDOT staff), and Chair (non-KDOT staff, emphasis area expert).

What is an EAT Member Commitment? Each EAT meets at least four times a year, currently through virtual meetings to:

- Utilize data to select, prioritize, or advance strategies,
- Develop performance measures, and
- Advance the implementation of programs and projects from the SHSP (i.e., funding, legislation, staffing, lead agencies, etc.)

How do I join an EAT? Contact Ingrid Vandervort, Kansas Department of Transportation, Bureau of Transportation Safety via email:

ingrid.vandervort@ks.gov

It takes everyone to get to no one. Join the Drive to Zero Kansas Traffic Deaths.

KS LTAP PARTNERS IN THE PROMOTION OF THE ROAD SAFETY CHAMPION PROGRAM

What is the Road Safety Champion Program?

The Road Safety Champion Program (RSCP) is a nationally recognized certificate program designed to build a knowledgeable, safety minded workforce, responsible for operating, maintaining, and designing local roads. Road Safety Champions prioritize safety and are motivated to implement safety improvements that reduce fatalities and serious injuries on rural and local roadways.

Training participants will complete a series of courses in core and specialized safety issues. When all requirements are met, participants will be awarded a Road Safety Champion Program Certificate. (Note: the certificate is not a degree or professional certification.)

You can learn more about the program here:

https://ruralsafetycenter.org/road-safety-champion-program/?utm_medium=email&utm_source=govdelivery

NOTES about the Webinars:

- These trainings will use Zoom. Please ensure Zoom is on your "safe" email list before registering to ensure you receive the link to attend.
- These trainings are part of the RSCP, so the recording WILL NOT be made available to registrants. Please only register if you can attend that day.
- You do not need to attend all 7 modules and they can be taken out of order.
- You must attend the entire training to receive a certificate of completion.

WEBINAR SCHEDULE:

RSCP Core Module #4: Overview of the MUTCD

Tuesday, April 4, 2023 | 1 p.m - 3 p.m. EST

This module is an introduction and overview of the Manual on Uniform Traffic Control Devices (MUTCD). The MUTCD defines the standards by which traffic signs, road surface markings, and signals are designed, installed, and used on all public streets, highways, bikeways, and private roads open to public traffic. This module will help participants become aware of the need for uniformity of traffic control devices. Emphasis will be given to an understanding of the MUTCD, Traffic Control Devices, and Temporary Traffic Control.

Register:

https://us02web.zoom.us/webinar/register/WN_vjylcJDITPuMBZmUMmNN2Q_

RSCP Core Module #5: Intersection of Transportation with Public Health and Law Enforcement

Tuesday, April 11, 2023 | 1 p.m - 3 p.m. EST

This two-hour training will discuss the need for transportation, public health and law enforcement agencies to work together on the road to zero and strategies to achieve this.

Register:

https://us02web.zoom.us/webinar/register/WN_KcpQulk9Sp6UWj_Xy2lllw

RSCP Core Module #6: Reading the Roadway

Tuesday, April 18, 2023 | 1 p.m - 3 p.m. EST

This two-hour training will teach participants how to "read the road" as well as the importance of doing so in daily activities. It will use real world examples on different roadway components to demonstrate how participants may be able to uncover potential safety issues during their routine activities. It will also discuss how the road safety audit process can be used to "read the road" in a more formal approach. The training will also discuss the consequences daily activities of workers may have on safety.

Register:

https://us02web.zoom.us/webinar/register/WN_51Va8uBLTCqzITTHdWzRJA

RSCP Core Module #7: Safety Analysis Process

Tuesday, April 25, 2023 | 1 p.m - 3 p.m. EST

The safety analysis process, as part of the FHWA Safety Toolkit, is a systematic process for identifying the factors that can contribute to crashes and implementing effective countermeasures. It is a best practice method that is flexible and can be used to fit your needs. This two-hour training will cover the safety analysis process and discuss how it can be applied using two different complementary analysis methods: the traditional site analysis and the systemic analysis. Additionally, case studies will be utilized to demonstrate practical applications on the process.

Register:

https://us02web.zoom.us/webinar/register/WN_C0AU_vWbQRO86XN9BIHHhw

KS LTAP 2023 TRAINING SCHEDULE



Month	Date	Topic	Location	Level
FEBRUARY	2/1	MUTCD	Hays	Level 1
	2/28	Asphalt Road Maintenance	Garden City	Level 1
MARCH	3/1	Asphalt Road Maintenance	Hays	Level 1
	3/2	Asphalt Road Maintenance	Salina	Level 1
	3/3	Asphalt Road Maintenance	Burlington	Level 1
	3/7	Culvert Management	Tribune	Level 2
	3/8	Culvert Management	Salina	Level 2
	3/8	MUTCD	Wichita	Level 1
	3/16	Bridge 101	Atchison	Level 1
	3/20	Workplace, Jobsite, & Equipment Safety	Garden City	Level 1
	3/21	Workplace, Jobsite, & Equipment Safety	Wichita	Level 1
	3/22	Workplace, Jobsite, & Equipment Safety	Salina	Level 1
	3/23	Workplace, Jobsite, & Equipment Safety	Atchison	Level 1
	3/24	Workplace, Jobsite, & Equipment Safety	Burlington	Level 1
	3/27	Gravel Road Maintenance	Garden City	Level 1
3/28	Gravel Road Maintenance	Wichita	Level 1	
3/30	Culverts and Drainage	Burlington	Level 1	
3/31	Gravel Road Maintenance	Columbus	Level 1	
APRIL	4/5	MUTCD	Lawrence	Level 1
	4/10	Culverts and Drainage	Salina	Level 1
	4/13	Culverts and Drainage	Garden City	Level 1
	4/13	Asset Management & Cost Accounting	Salina	Level 3
MAY	5/15	New Roads Supervisors (KAC Conference)	Manhattan	
SEPTEMBER	9/26-27	Public Works 1 & 2	Atchison	Level 2
OCTOBER	10/2	Snow & Ice Control	Garden City	Level 1
	10/3	Snow & Ice Control	Hays	Level 1
	10/4	Snow & Ice Control	Salina	Level 1
	10/5	Snow & Ice Control	Wichita	Level 1
	10/6	Snow & Ice Control	Burlington	Level 1
	10/10	Legal Permitting & Regulatory Processes	Wichita	Level 3
	10/12	Signing Low Volume Roads	Burlington	
	10/17	Foundations in Customer Service	Garden City	Level 1
	10/19	Foundations in Customer Service	Burlington	Level 1
	10/24	Project Planning & Management	Wichita	Level 3
	10/25	Project Planning & Management	Salina	Level 3
10/26	Making Safer Roads	Atchison	Level 2	
NOVEMBER	11/1 & 2	Public Works 1 & 2	Burlington	Level 2
	11/7	Supervisor's Role in Enhancing Cooperative Work Relationships	Salina	Level 2
	11/8	Communication Skills for Effective Supervision	Salina	Level 2
VIRTUAL TRAINING PLATFORM		UAS Training		
		Signing Low-Volume Rural Roads		
		Asphalt Road Maintenance		Level 1
		Providing Employee Safety		Level 2
		Concrete Road Maintenance		Level 1
		Guardrail Maintenance & Repair		Level 1
		FoRRRWd: Countermeasures		
		ADA Basic Requirements		Level 1
	Bridge 101		Level 1	
	Risk & Liability		Level 1	
	Legal Permitting & Regulatory Processes		Level 3	

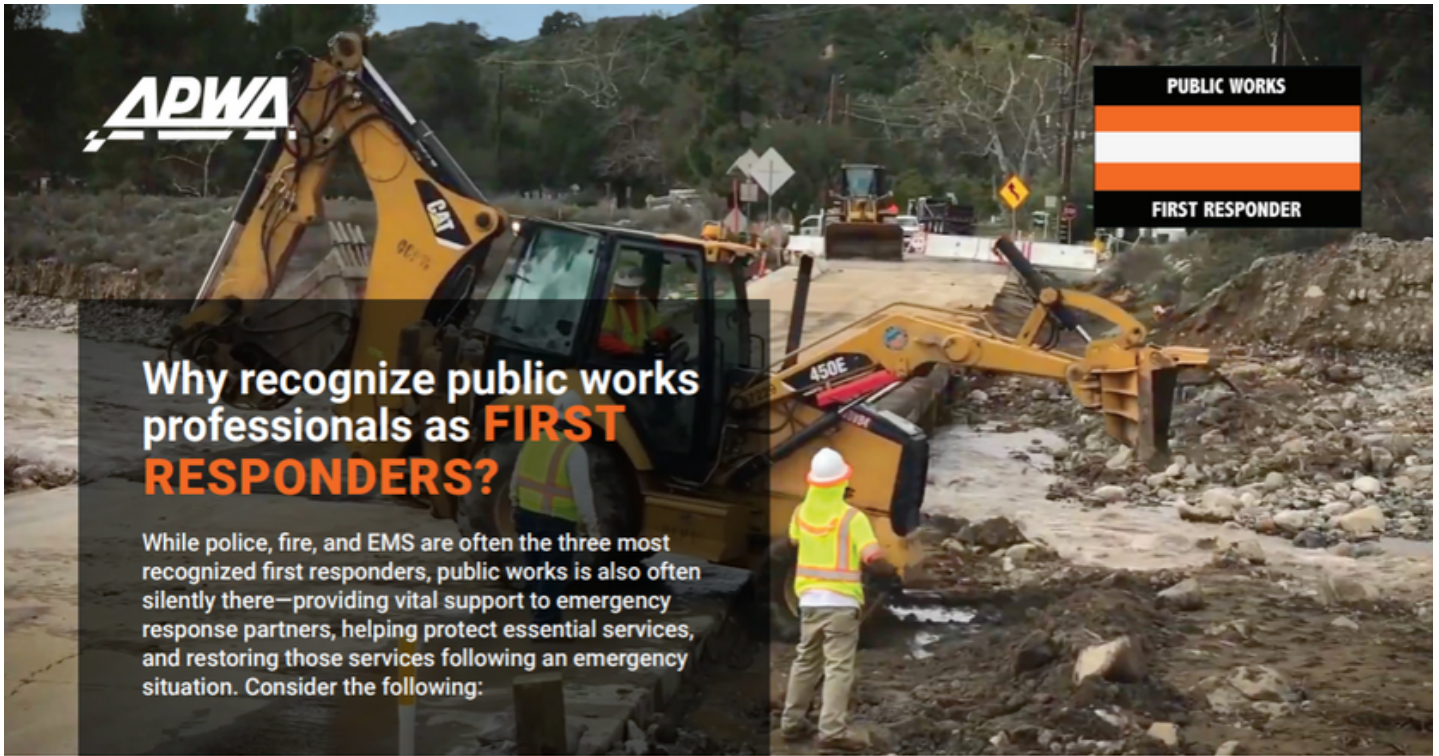
We will continue to offer on-demand classes in 2023. An on-demand class is where our instructor comes to you for a training. New for 2023, we will now require at least 15 participants in order to offer on-demand class. If you have any questions regarding on-demand classes, please reach out to Megan Hazelwood at mhazelwood@ku.edu.

A printable version of the 2023 KS LTAP Training Schedule can be found here:

[https://kutc.ku.edu/sites/kutc/files/documents/LTAP/2023/Printable%202023%20LTAP%20Training%20Schedule%20\(1\).pdf](https://kutc.ku.edu/sites/kutc/files/documents/LTAP/2023/Printable%202023%20LTAP%20Training%20Schedule%20(1).pdf)

Registration is open for all classes and can done here:

<https://www.events-kutc.ku.edu/kutc/LTAP.asp>



Why recognize public works professionals as **FIRST RESPONDERS**?

While police, fire, and EMS are often the three most recognized first responders, public works is also often silently there—providing vital support to emergency response partners, helping protect essential services, and restoring those services following an emergency situation. Consider the following:

- In 2003, President George W. Bush issued [Presidential Policy Directive 8 \(PPD-8\)](#) officially recognizing public works as first responders.
- In 2010, Mississippi, under House Bill (HB) 664, recognized public works professionals as first responders.
- In 2019, the US Senate passed Senate Concurrent Resolution 15 ([S.Con.Res.15](#)), "Expressing support for the designation of October 28, 2019, as Honoring the Nation's First Responders Day." Public works is specifically included.
- In 2022 New Hampshire Governor Chris Sununu signed into law SB325, formally recognizing public works employees as first responders.
- In 2022, New Hampshire passed HB 536, "An Act relative to death benefits for public works employees killed in the line of duty, and relative to workers' compensation offsets for certain retirement system benefits."
- Public works is often considered "the silent arm of public safety" ... usually without fanfare. Public works professionals are often the first on scene and the last to leave the scenes of disasters—no matter the peril.
- The National Incident Management System (NIMS) lists public works alongside police, fire, and public health in its documentation: [National Incident Management System, 3rd Edition \(fema.gov\)](#).

What can I do?

- Establish a public works awareness committee.
- Arrange networking sessions with fellow public works professionals to share your ideas, experiences, and your public works awareness success stories.
- Put together a short presentation/video to share with your elected officials at the local, county, state, and federal levels highlighting the vital role public works professionals have as first responders.
- Reach out to APWA's Government Affairs staff and refer to the APWA website for the latest information.
- When discussing public works as first responders, remember to use the APWA theme, "Ready and Resilient."
- Remind your organizations and those you serve, whether it is clearing debris after a major storm, clearing the roads during winter weather conditions, setting up protective barriers, or any other critical essential function, that **public works is always there** to ensure government operations return to normal as quickly as possible. "Public works is the silent arm of public safety!"

Please don't hesitate to reach out to APWA Government Affairs Manager, Marty Williams by phone (202) 218-6732 or email mwilliams@apwa.net, or APWA's Marketing Department by phone at (816) 595-5257 or email jshilhanek@apwa.net, should you have any questions or need assistance raising awareness of public works as first responders.

LOCAL FOOD SALES TAX

" Local Food Sales Tax Removal: SB 248, as amended by the Senate, would have moved the path to zero on food sales tax to January 1, 2024, instead of 2025 as is current law. However, it removed the local sales tax levy on food sales. This is in direct conflict with current law, and violates the agreement made between the Legislature and cities last year when the food sales tax removal was passed. **The House Taxation Committee did not move the bill forward. We thank the committee for understanding the importance of preserving the local sales tax collection on food.** Please consider sending a thank you email to members of the committee."

APWA ACCREDITATION



Congratulations!

Lawrence, Kansas Municipal Services and Operations Department for their American Public Works Association Accreditation!